

DSMC3 Red 7 inch Touch Monitor Quick Start Guide



PHYSICAL PROPERTIES



PHYSICAL PROPERTIES

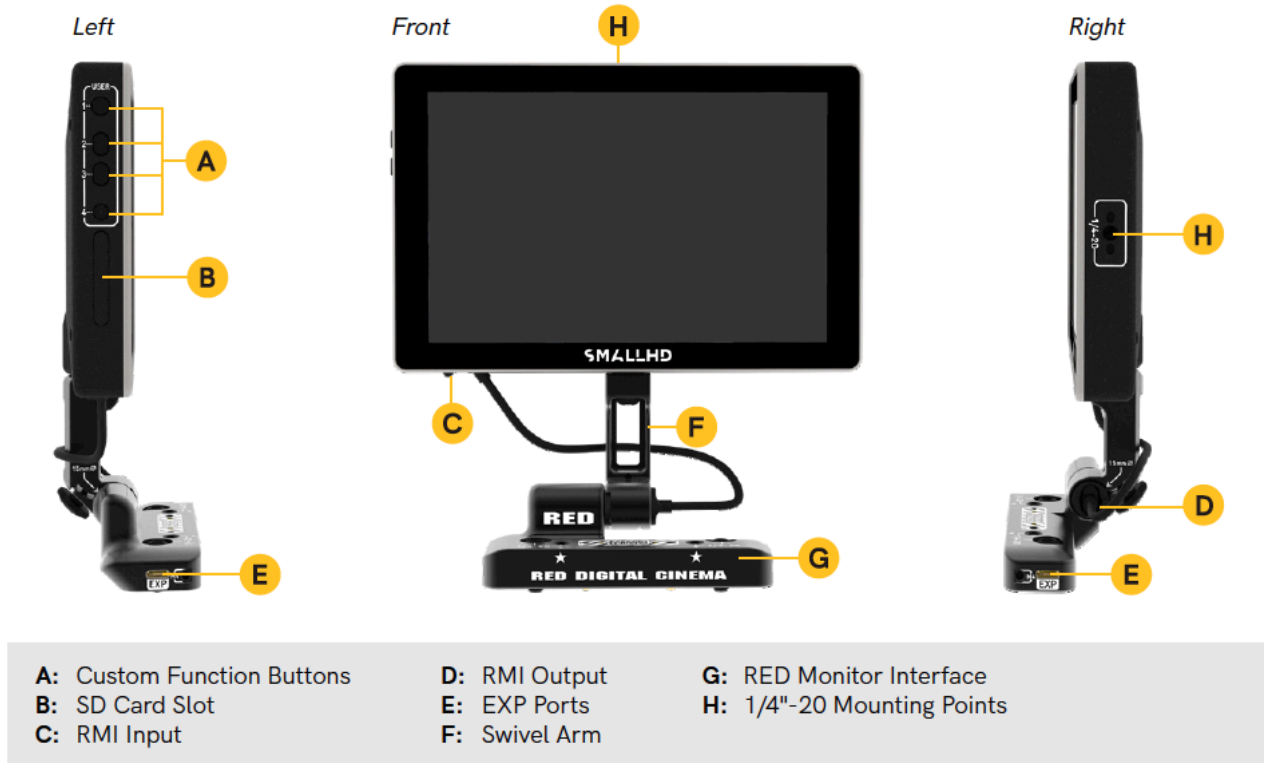






TABLE OF CONTENTS

Power and Connect 6

Mounting Options..... 7

UI Overview 8

PageOS 4 Overview..... 13

Display Settings 16

Audio/Video Controls.....17

Capture Settings.....17

Interface Settings.....18

User Customizations.....19

System Settings20

FCC Compliance 22



POWER AND CONNECT

POWER & SIGNAL

Your monitor receives its power and signal from the single RMI cable connected between the monitor and Red Monitor Interface.

- Connect this single cable to your monitor and RMI to receive power and signal automatically when the camera is turned on - no need to select an input.
- The connection utilizes cable-locking to keep power uninterrupted. On the RMI side of the cable, twist to lock and unlock the cable into place. On the monitor end, the cable locks in place automatically when connected. Pushing the latch at the RMI connection point releases the cable from its locked position.
 - To attach your RMI cable to your monitor, make sure you insert the cable at an angle. [1]
 - The cable will lock in place once it is fully inserted into the monitor.
 - To release the cable and remove it, just push this lever towards the center of the monitor and pull it out. [2]

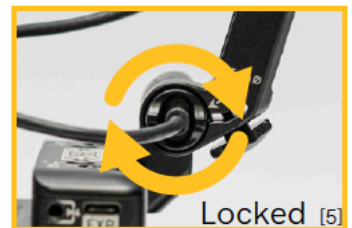




POWER AND CONNECT

POWER & SIGNAL

- To attach the RMI cable to your monitor arm, make sure that your cable lock is in the open position. [3]
- Insert the RMI cable until you can feel that it is fully seated in the RMI port. [4]
- Rotate the cable lock wheel to lock your connector in place. [5]



MOUNTING OPTIONS

ARTICULATING ARM

- This custom arm allows for 170 degree rotation for easy storage
- Use allen wrench to detach from monitor



UI OVERVIEW





UI OVERVIEW

Tap a camera setting along the top or bottom of your screen to adjust.





UI OVERVIEW

AUTOFOCUS

- Tap the "AF" icon to access Autofocus; this will reveal two rows of options at the top and bottom of the monitor.
- While in this mode, tap anywhere on the camera feed to change the location of the Autofocus Window.

AF MODE (TOP ROW)

- Select 'Single' to activate autofocus only until it achieves a lock within the AF Window area.
- Select 'Continuous' for Autofocus to constantly remain active within the AF Window area.

AF WINDOW (BOTTOM ROW)

- Select between Small, Medium, Large, Wide & Vertical window sizes to dial in the precision you need.
- Tap the 'X' on the top or bottom row to exit the Autofocus menu.





UI OVERVIEW

Swipe up and down to adjust the Red camera settings once adjustment menu appears.



Note: SmallHD PageOS4 inside.
The SmallHD UI functions the same as always.



UI OVERVIEW

Swipe down to enter the pages / lookaround view





PAGEOS 4 OVERVIEW

The PageOS 4 interface allows users to configure and assign specific image analyzing tools and/or features to up to eight customizable pages. Users can access those tools by navigating to the corresponding page on the monitor, instead of enabling or disabling features individually.

GENERAL LAYOUT

1 Pages View

The 'Pages View' offers a zoomed-out perspective of all configured pages, allowing organization and naming to ensure the most efficient overall setup.

2 Settings

Adjust a wide range of global monitor settings.





PAGEOS 4 OVERVIEW

BASIC NAVIGATION

1 Touch Screen

PageOS has an easy to navigate touch screen that works just like your smartphone.

- Pinch to zoom
- Swipe left and right between custom pages
- Slide you finger down for a view of all your preset pages
- Swipe all the way left to access your deep settings menu (Calibration, Profiles, etc)

2 Adding New Pages

To create a new page from either a fresh workspace, a premade template, or a specific utility, navigate to the right-hand side of the Pages View



PAGEOS 4 OVERVIEW

3 Activating Tools

Tap your screen while on any page to reveal the toolbar. Then select the tool you want to activate. To adjust the custom settings of that tool press the arrow that appears next to the name of the tool.

4 Add New Tool to a Page

Tap your screen while on any page to reveal the toolbar. Press the plus sign that appears on the left side of the page. Select the tool you want added to that page.





PAGEOS 4 OVERVIEW

SETTINGS MENU

Access monitor settings by swiping to the left-most page.

SETTINGS: DISPLAY

- 1 Backlight**
Select a backlight level that suits your viewing environment to maximize contrast and viewability.
- 2 Calibration**
Calibration ensures chrominance and luminance accuracy that can be relied upon for critical color decisions.
- 3 Appearance**
Apply sharpening to the video data, if desired.





PAGEOS 4 OVERVIEW

SETTINGS: CONTROLS

- 1 Image Rotate**
Image Rotate options enable upside-down mounting - or enable Mirroring for when the monitor must face the subject.

SETTINGS: CAPTURE

- 1 Image Capture**
Configure the Image Capture tool to help facilitate shot matching or for automatic thumbnail creation upon pressing Record. (Note: SD card must be inserted into the monitor to perform an image capture).
- 2 Image Gallery**
Browse the Image Gallery to review the images on your removable media.



PAGEOS 4 OVERVIEW

SETTINGS: INTERFACE

- 1 Pixel Zoom**
Configure the default zoom levels for Pixel Zoom to 'punch in' to a desired amount when spot checking a particular shot.

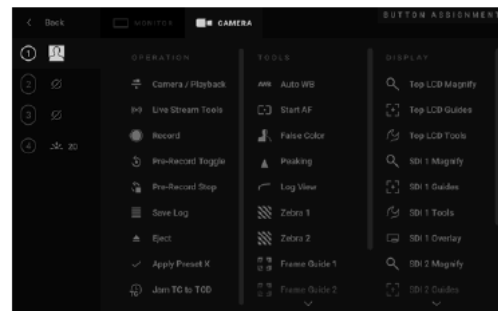
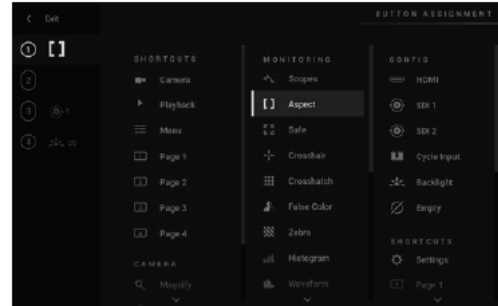




PAGEOS 4 OVERVIEW

SETTINGS: USER

- 1 Backdrop**
Enable a customizable backdrop for when the monitor is not displaying a signal.
- 2 Date Time**
Setting the correct Date & Time will ensure that captured images get an accurate timestamp.
- 3 Profiles**
Save or load the entire monitor's configuration to an SD card, great for keeping consistent settings across several monitors.





PAGEOS 4 OVERVIEW

SETTINGS: SYSTEM

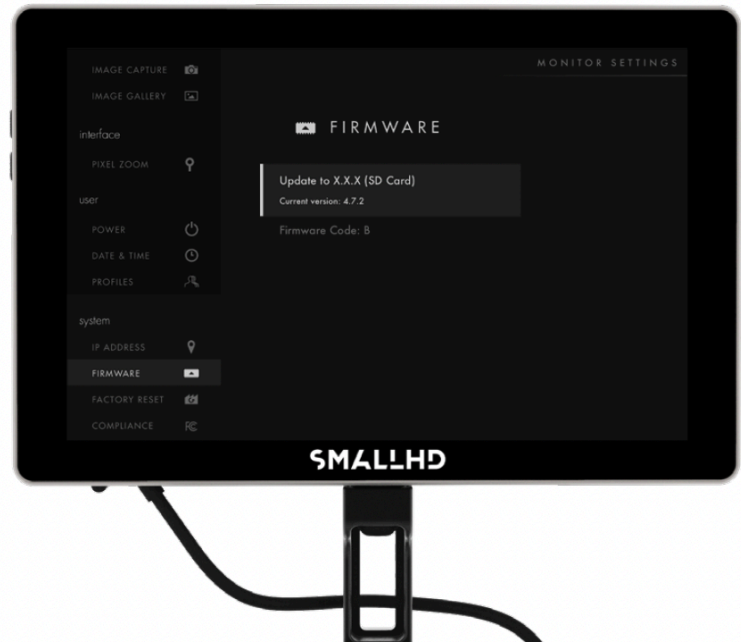
1 Firmware

Firmware can be updated by inserting an SD card with a compatible update file.

For the latest firmware download visit:
www.smallhd.com/software

2 Factory Reset

Reset the monitor settings to its original factory settings, with the option to clear registration and calibration.





PAGEOS 4 OVERVIEW

UPDATE YOUR MONITOR'S FIRMWARE:

- Visit <https://downloads.smallhd.com> and select the RED® Touch tab to download the latest firmware file.
- Copy the .bin file to your SD card. Use an SD card that is at least 2GB and at most 16GB.
- Insert your SD card into the monitor.
- From the settings menu, scroll down to the 'Firmware' option.
(To get to the settings menu, navigate to the leftmost page of the monitor UI.)
- An option to update your firmware should appear on the screen.
- Select 'Update' and follow the on-screen prompts to complete the firmware update.

Note: Ensure that power is not interrupted during the installation



LINKS AND FCC RULES/REGULATIONS

- 1** Additional Resources
guide.smallhd.com



- 2** Social Media
[@smallhd](#)



Compliance



Certifications

This device complies with part 15 of the FCC rules. Operation is subject to the following two conditions: this device may not cause harmful interference, and this device must accept any interference received, including interference that may cause undesired operation.



© 2021 SmallHD, LLC. All rights reserved.

Rev A